

Recent property acquisitions
made by the Bahá'í Community
of Canada

Acquisitions récentes de
propriétés par la communauté
bahá'íe du Canada

* Some photos were taken prior to the pandemic or prior to mask mandates

* Certaines photos ont été prises avant la pandémie ou avant la prescription de masques

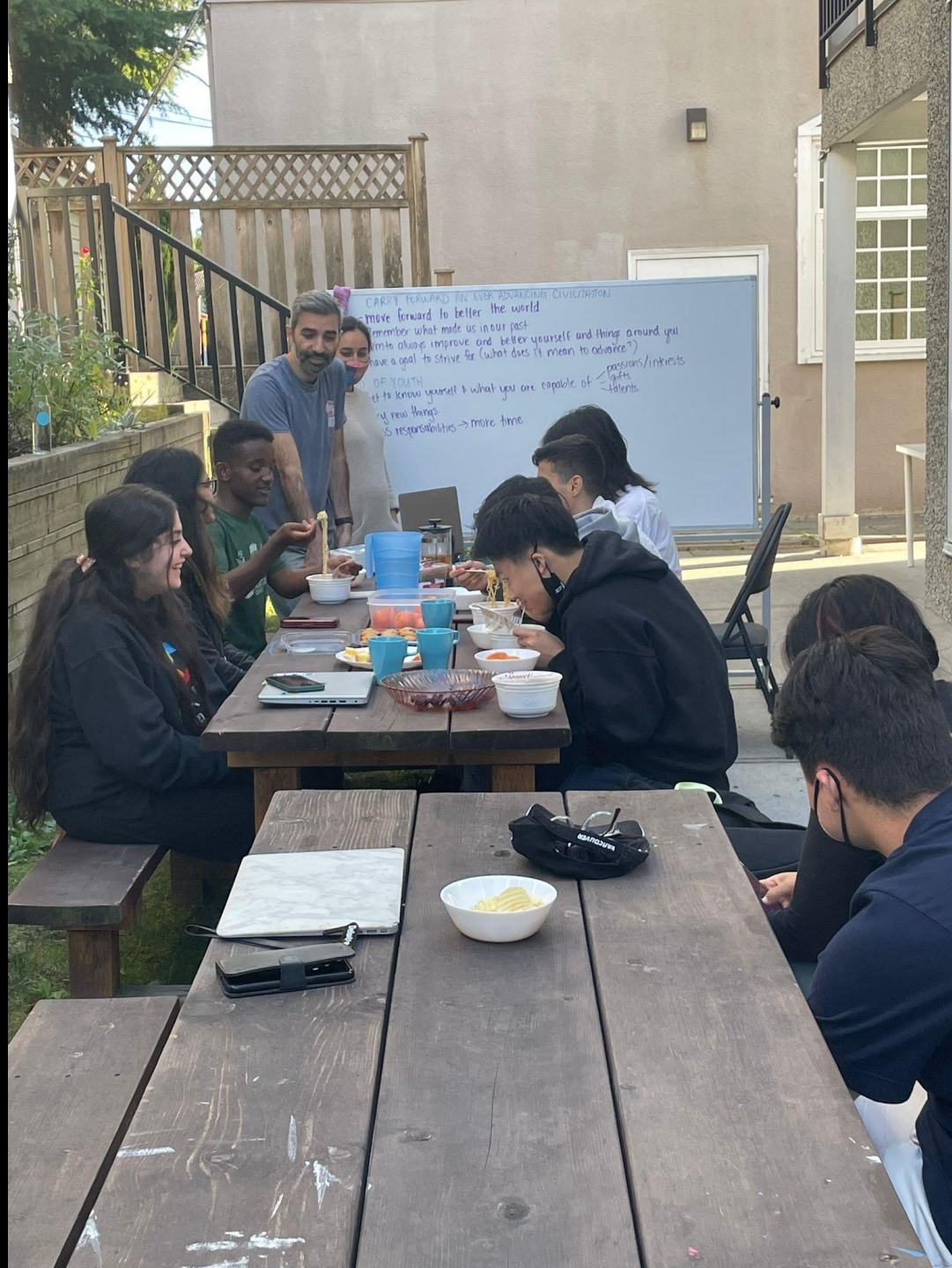
Educational facilities

Établissements éducatifs



Vancouver Bahá'í Centre of Learning
Centre d'entre d'apprentissage bahá'í de Vancouver













Bethany Bahá'í Centre of Learning
Centre d'entre d'apprentissage bahá'í de Bethany







Gratitude Hall

WE acknowledge that the land
on which we gather is traditional territory.



Educational facility serving the Toronto Cluster – 7015 Leslie Street
Établissement éducatif desservant le groupement de Toronto – 7015, rue Leslie



LOW CEILING
TO AVOID RISK OF INJURY
PLEASE DO NOT JUMP
OR EXERCISE BELOW

ers
PERS
PPERS
era
IPERS
Turtle
Bubbles









Educational facility serving the Ottawa Cluster – Lanark, ON
Établissement éducatif desservant le groupement d'Ottawa – Lanark, Ontario









Neighbourhood Centres

Centres de quartier



Delena – Hamilton, ON

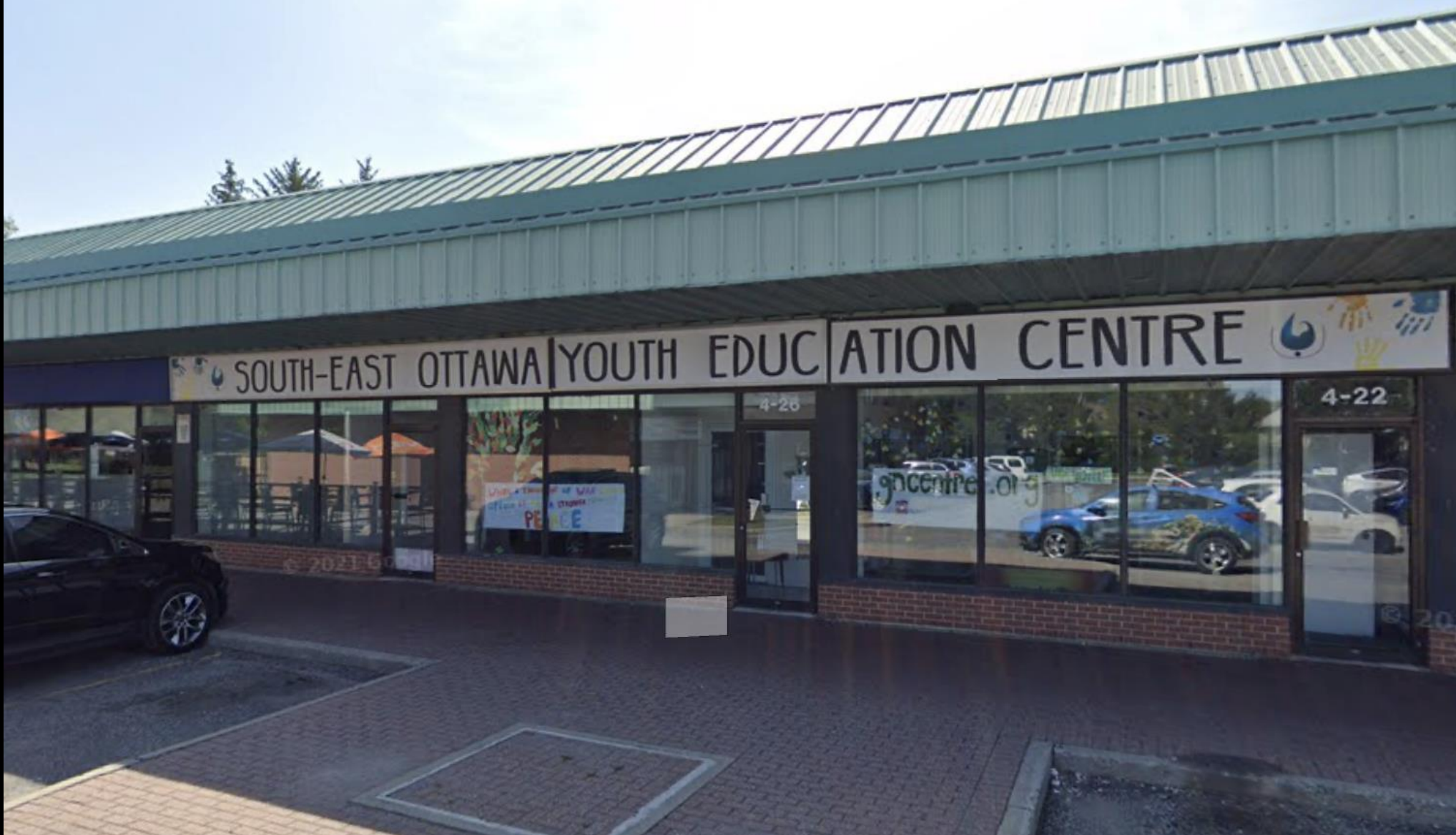




Guildford – Surrey, BC







Greenboro – Ottawa, ON









Upper Don Mills – Toronto, ON







LEARNING FROM THE
EXEMPLAR: AMY T. BARK

THE MEANING OF SERVICE



Service is a way of life. It is a way of thinking and acting that is based on the belief that we are all part of a larger community and that we have a responsibility to help one another. Service is a way of life that is based on the belief that we are all part of a larger community and that we have a responsibility to help one another.



LEARNING FROM THE
EXEMPLAR: AMY T. BARK

THE MEANING OF SERVICE

Service is a way of life. It is a way of thinking and acting that is based on the belief that we are all part of a larger community and that we have a responsibility to help one another. Service is a way of life that is based on the belief that we are all part of a larger community and that we have a responsibility to help one another.





Kipps Lane – London, ON










North Poco – Tri-Cities, BC

MCPHAIL
BUILDING
6760
604 273 7505
RY

RY RICHMOND YOUTH | 青少年
EDUCATION CENTER | 教育中心

 **Long & McQuade**



Central Richmond – Vancouver, BC









Flour Mill – Sudbury, ON





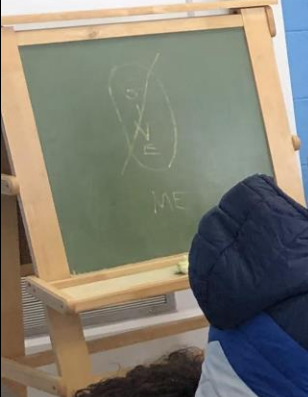


you kinde
Smell...
like a baka

Ye Are Even as the Fire
F
Ye are even as the fire
Which in the darkness of
the night
G
Hath been kindled in the
mountain of Sion
F
Let your light shine before
the eyes of men
G
Let your light shine before
the eyes of men (S)

O Son of Being!
O Son of Being!
Easy not hard
with this world
F
For with fire we see the light
G
That we can illuminate the
darkness of men

So So Powerful
So so powerful so so powerful
is the light of glory
That it can illuminate the
darkness of men





PLATE, CUPS,
CUTLERY, TOWEL
WASHING MACHINE

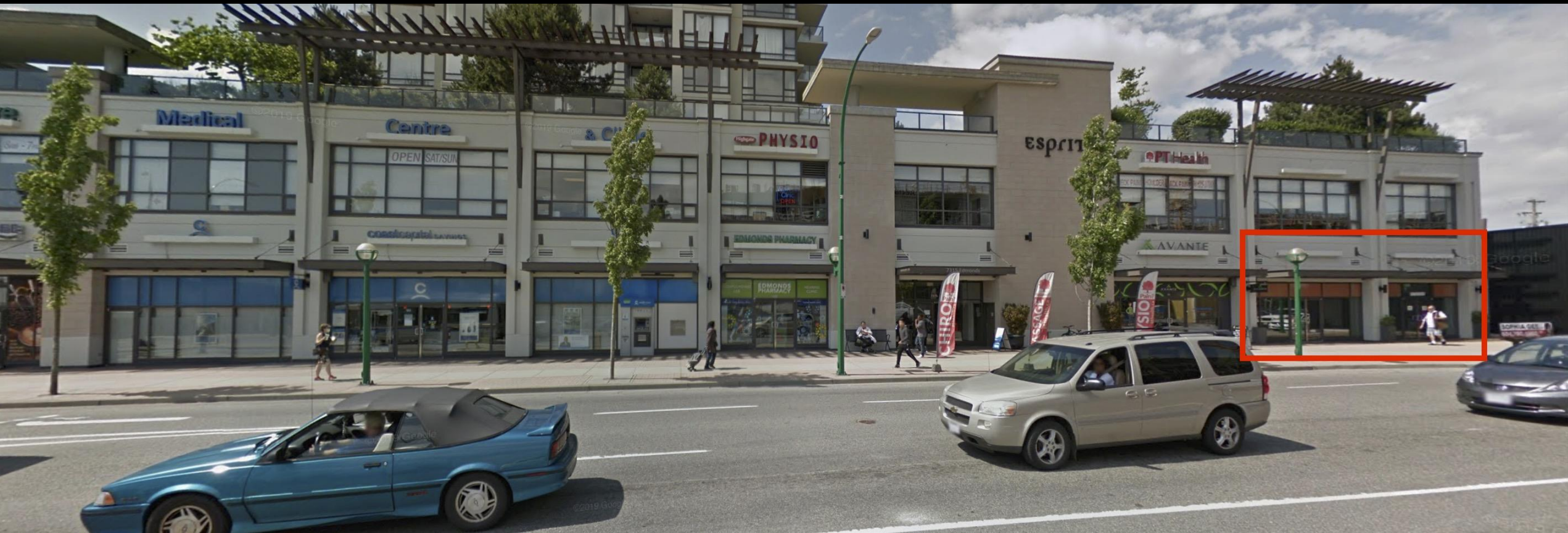
PLATE, CUPS,
CUTLERY, TOWEL
WASHING MACHINE



Côte-des-Neiges – Montréal, QC







Edmonds – Vancouver, BC













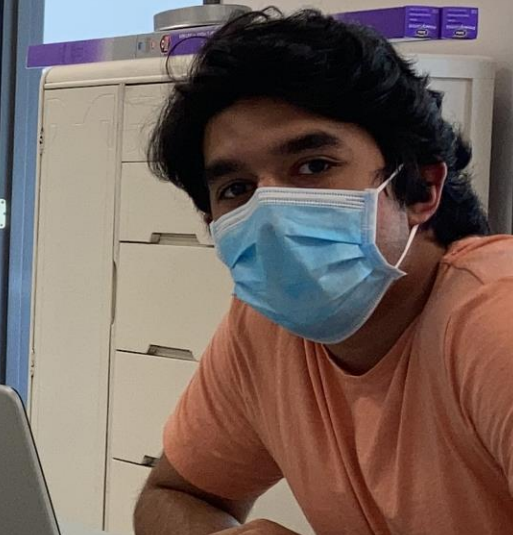
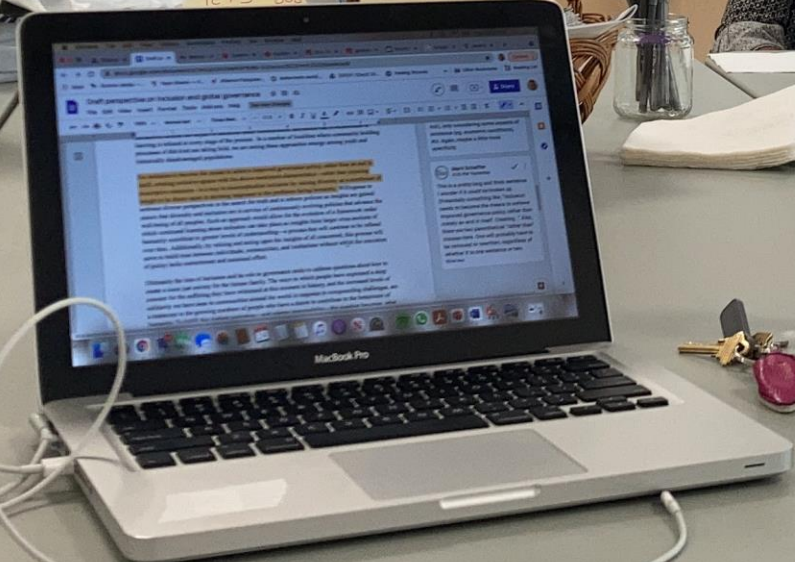
Donald Street – Ottawa, ON





1240
1513 - Tommy
1505 - Lemy
711 - Shirin
614 - Fatima
244 215 - Fatima
813 - Anstey (red)
601 - Rina + Christian
Reyes, La
Jacques -
4273 - Jos

1016 - Gina sis
W41: VARTY
Pass: 9 Brill
114 - 1244 ChaliElysee
Dannweldom | 462 Marche







Tillicum – Victoria, BC



COMMUNITY
EMPOWERMENT
CENTRE

102

LOADING
ZONE

VISA



Remembers of all times and in
all places that God is
faithful and do not doubt this
Be patient even though great
tribulations may come upon thee
Fear not! Fear not! Be firm in
the love of Thy Lord
as a mountain upon
its steadfastness



Springdale – Brampton, ON







Roywood – Toronto, ON



Let each man be better than its eve, and each morrow richer than its yesterday.

This Nature
Ye are The fruits of One Tree and the root of it





Rowntree – Toronto, ON



CHILDREN'S FESTIVAL 2024



CHILDREN'S FESTIVAL 2024